

**Head Office:**  
Dixon Kelley Estate Agents  
1 Penn Court  
Station Road, West Moors  
Dorset. BH22 0JJ

**Telephone: 01202 877511**

# DORSET PARK HOMES

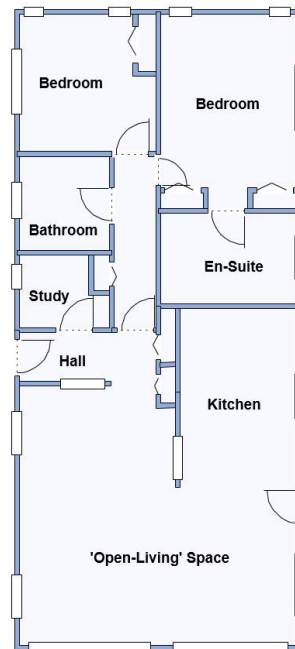
**DRAFT**

[www.dorsetparkhomes.com](http://www.dorsetparkhomes.com)

**14 Bluebells Court, Organford Manor Country Park, Organford, Poole. BH16 6ES**



**Spacious Home backing onto Fields**



This drawing has been prepared for diagrammatic purpose only. Not to scale.

## 2-Bedroom Park Home - approx 44' x 20'

**Accommodation & approximate room dimensions:**

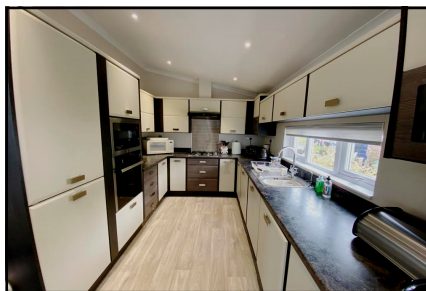
- Omar 'Accent' 2016
- Entrance Hall: Cloaks & storage cupboard.
- 'Open-Plan' Living Space: approx 23' x 19'2" max. A stunning, bright room with vaulted ceiling, feature fireplace & sky light windows.
- Kitchen: Superb range of floor & wall units. High level oven & microwave, hob with cooker hood. Integrated dishwasher, washing machine, tumble dryer & fridge/freezer. Boiler cupboard.
- Inner Hall: Linen cupboard.
- Bedroom 1: approx 13'4" x 9'4" Fitted wardrobes.
- Luxury En-Suite Shower Room.
- Bedroom 2: approx 9'5" x 9'4" Fitted wardrobes.
- Bathroom: Panelled bath, Vanity basin & WC.
- Gas Central Heating (system untested)
- PVCu Double-Glazing
- Delightful Garden laid to patio & lawn. Metal Shed
- Parking on Plot
- Age Restriction 45+      Pets Considered
- Beautifully maintained, gated Residential Park with dog walking area. Semi-rural location near to Poole & Wareham.

**Price: £260,000**

**VIEWING STRICTLY BY APPOINTMENT WITH THE VENDOR'S AGENT Dorset Park Homes 01202 877511**

**IMPORTANT NOTE:** These particulars are believed to be correct but their accuracy is not guaranteed. They do not form part of any contract. Nothing in these particulars shall be deemed to be a statement that the property is in good structural condition or otherwise, nor that any of the services, appliances, equipment or facilities are in good working order or have been tested. Purchasers should satisfy themselves on such matters prior to purchase Ref.W04732

## Luxury Modern Home



**Field Views**

**Pitch Fee: approx £68.70 per week including Water & Sewerage**  
**Subject to Annual Review**  
**Council Tax Band: 'A'      Tenure: 1983 Mobile Homes Act Agreement**

*The recommended specialist in Park Home sales*  
Partner: Simon Dixon

